

# High Performance New Era<sup>®</sup> CONDOR-S<sup>™</sup> Rod Guides



The Condor-S is recommended as an effective low cost solution for paraffin control. The increased contact surface due to the extra wide fins provides superior paraffin cleaning with every stroke. In addition it has greater EWW than any standard guide design, giving it excellent centralization properties. When used as recommended with a Hercules<sup>®</sup> rod rotator the wide fins allow for easier rotation and less chance of torque up in rod-cut tubing. Available in a variety of materials and sizes.

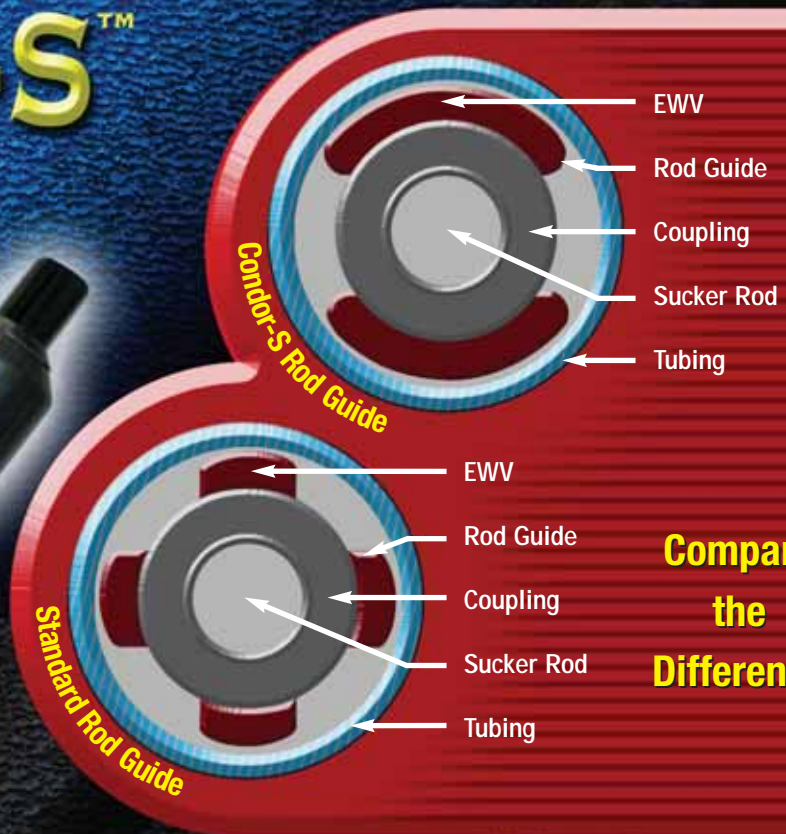
## FEATURES

- Increased Contact Surface is achieved due to the extra wide fins on this rod guide.
- Low Cost Solution for highly effective paraffin control.
- Greater Erodible Wear Volume than any standard guide design.
- Nominal Tubing Sizes: 2", 2-1/2"
- All Materials Available

NOTE: Hercules<sup>®</sup> rod rotators and leveling plates should always be used with High Performance Design guides. Hercules<sup>®</sup> polished rod clamps have a small rotational radius and are specifically engineered for use with Hercules<sup>®</sup> rod rotators.



A Unit of Robbins & Myers, Inc.



**Compare  
the  
Difference**

## Erodible Wear Volume

Erodible wear volume (EWW) refers to the amount of rod guide material outside the OD of the rod coupling. EWW represents the true protection rod guides offer because it is all that prevents metal-to-metal contact. Once the volume outside the rod coupling diameter is eroded, the guide no longer offers the protection for which it was designed. Consequently, it is imperative that the rod string be rotated to distribute wear on the guides evenly. By rotating and distributing the wear evenly, a rod guide will last three times longer.

## Rod Rotation

Rod rotators, combined with rod guides used as paraffin scrapers, are the most efficient means of removing paraffin from inside the tubing. The rotating action also distributes wear evenly on rod guides and downhole pumps. Rod guides without a rotator only partially solve problems. Installing a rod rotator is the only way to get the most from rod guide investments. Hercules rod rotators have load capacities up to 40,000 lbs. and rotational speeds from 24 to 154 strokes per revolution. Torque control features on all Hercules<sup>®</sup> rod rotators prevent excess torque in steel and fiberglass sucker rods.

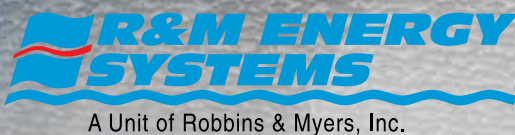
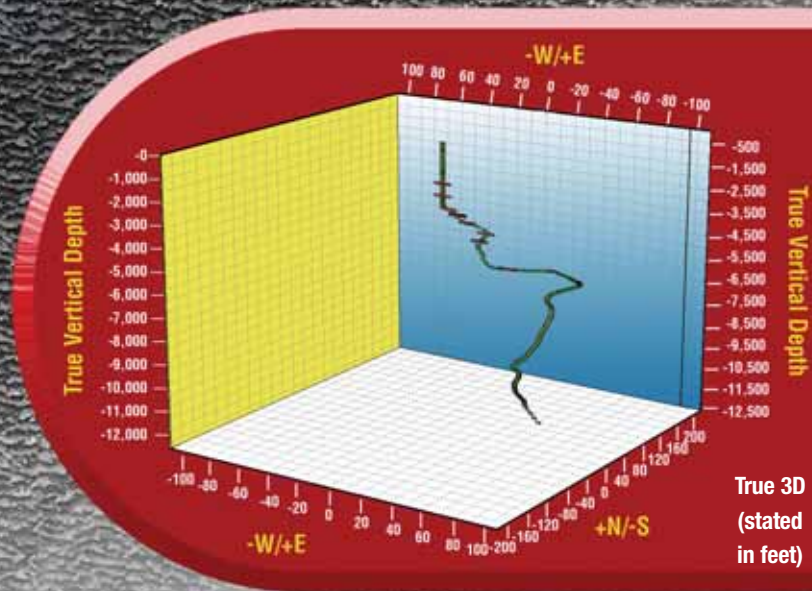
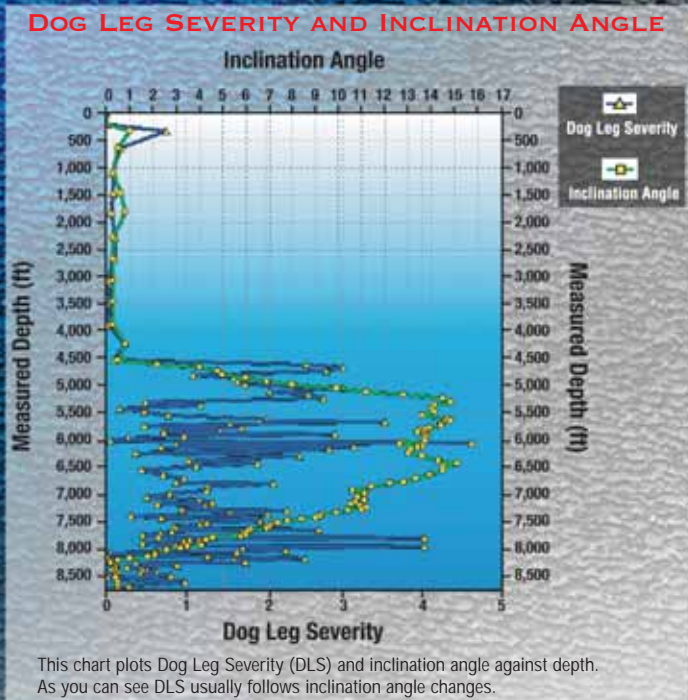
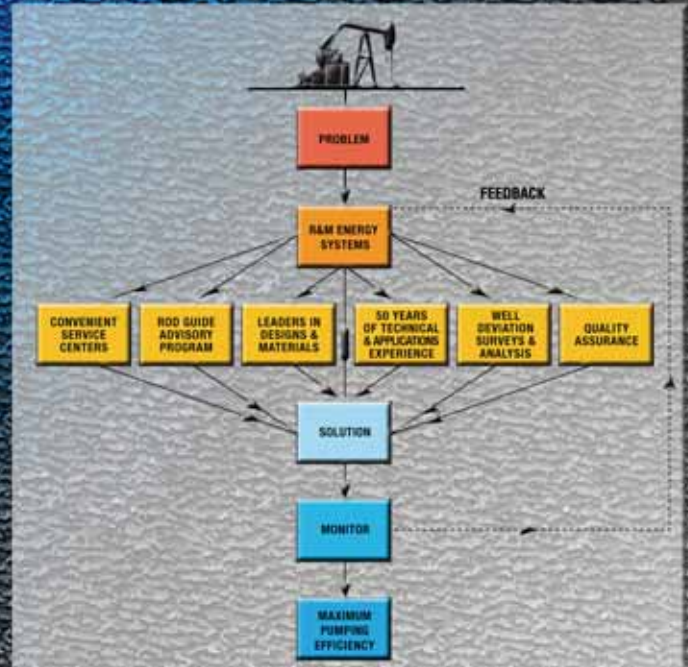
## Tubing Rotation

RODEC<sup>™</sup> tubing rotators and accessory products are designed to effectively distribute wear evenly around the entire internal circumference of the production tubing. The application of these products can dramatically increase tubing life span and reduce operating costs proportionately.

# ROD GUIDE ADVISORY PROGRAM (RGAP™)

Rod guide design, material and spacing decisions made without the benefit of R&M Energy Systems' Rod Guide Advisory Program (RGAP™) can be incorrect... and costly. Well conditions, workover histories and well bore deviations are all considered when recommending guides for a rod string. The Systems Approach using RGAP™ works to solve downhole problems:

- Rod guides for beam or PC pumps
- Evaluation of well data and workover history by well or by lease
- Computer-generated deviation, side load and rod guide wear logs
- Rod guide measurements to determine wear rates and wear zones
- Recommendations for rod guide design, material and spacing
- Quality assurance reports
- Preventative maintenance programs
- 24 hours, 7 days a week service
- Training Seminars:
  - Rod guide installation
  - Rod guide measurements
  - Preventative maintenance



For the best selection of material and optimal guide spacing, contact one of our sales representatives and take advantage of our field-tested Rod Guide Advisory Program (RGAP™).

**R&M Energy Systems**  
 2100 East Grand Boulevard  
 Oklahoma City, Oklahoma, U.S.A.  
 73129  
 (405) 672-6793  
 Fax: (405) 672-5072

**R&M Energy Systems Canada**  
 9830 - 45th Avenue  
 Edmonton, Alberta, Canada T6E 5C5  
 (800) 661-5659  
 (780) 435-5699  
 Fax: (780) 431-0302

**Web Site: [www.rmenergy.com](http://www.rmenergy.com)**  
**E-Mail: [info@rmenergy.com](mailto:info@rmenergy.com)**