

PRODUCT BULLETIN - P0303

Issued: November 6, 2003

Products: Moyno[®] Downhole Pump Rubber Thickness

Notice: For many decades, Moyno[®] Downhole Pumps have been engineered to meet the requirements of the Artificial Lift market. Moyno pumps have a wide range of designs from small, low flow models to high volume models. Each pump model incorporates various design geometries to achieve the desired performance within tubing and casing size limitations. The cross sectional shape of the stator cavity can vary depending on the design as shown in Figure 1.

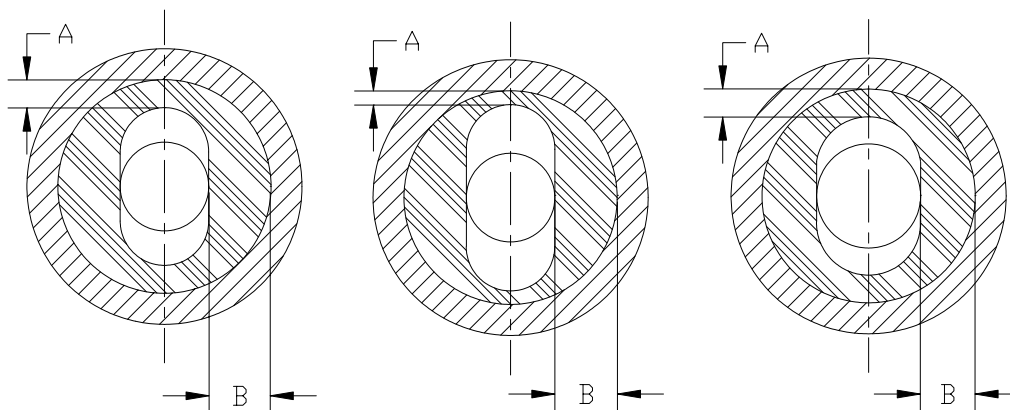


Figure 1 – Stator Cross Sectional Shape

The rubber thickness around the profile varies from a minimum 'A' at the stator major diameter to a maximum 'B' at the stator minor diameter. Figure 1 shows three different geometry designs with different minimum and maximum rubber thicknesses. Moyno Downhole Pumps offer a minimum rubber thickness from 0.225" to 0.45" and a maximum rubber thickness from 0.450" to 1.500". This range of rubber thickness has proven to be an acceptable range that provides reliable, trouble free pump operation.

Other Info: Direct any questions regarding this bulletin to:

R&M Energy Systems
Customer Service Department
1-888-355-5508 Ext. 252