

150H™

- Quick opening.
- Acme cap thread eliminates cross-threading.
- Cap with internal threads protected from the environment.
- Blow-out proof ram screw.
- Full opening.
- Reinforced ram block reduces extrusion.
- Cap o-ring provides reliable, pressure-tight seal.

200P™

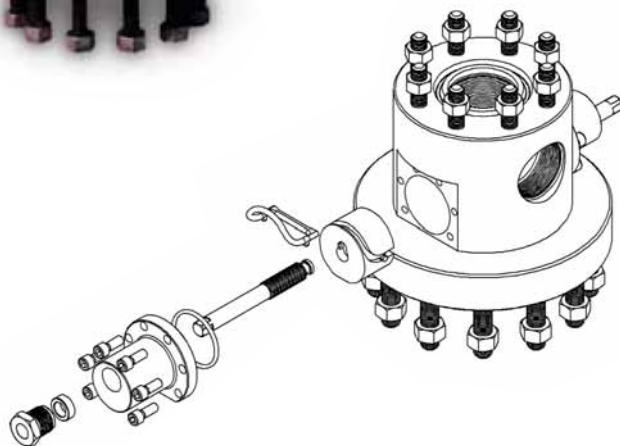
- Taper threaded end caps.
- Higher working pressure than 150H.
- Full opening.
- 3" EUE thread connections.
- Optional NACE trim.
- Optional low temperature carbon steel.

SPECIFICATIONS	150H™			200P™		
Sizes Available	2"	2-1/2"	3" LP	2"	2-1/2"	3"
Vertical Bore	1.975"	2.560"	2.970"	2.120"	2.440"	3.000"
Working Pressure	1500 PSI			2000 PSI		
Body & Cap Material	Ductile Iron*			Ductile Iron*, Carbon Steel		
Ram Material	See Page 17					
Ram Screw & Packing Gland	Carbon Steel**			Alloy Steel		
Ram Sizes	Blind, 5/8"-1", 1-1/8", 1-1/4", 1-1/2", 1-3/4"			Blind, 5/8"-1", 1-1/8", 1-1/4", 1-1/2", 1-3/4"		
NOTE: 150H & 200P RAMS ARE NOT INTERCHANGEABLE						
Ram Screw Packing	Acrylic Braided PTFE			NBR, HSN & FKM		
Connection	Male x Female Thread			Male x Female Thread or Flange		
Optional Flange Connections	N/A			2-1/16" 2000, 2-9/16" 2000, 3-1/8" 2000***		
Height	9-1/2"			10"		
Weight	43 lbs.			52 lbs.		
Width (Rams Open)	20"			26"		
Handles	Optional			Optional		

* Corrosion resistant materials & coatings available, contact customer service.

** NACE stainless steel optional.

*** Other flange sizes available.



Integral Flow Tee BOP (ITBOP™)

- Integrates a flow tee with a BOP.
- Uses 200P BOP rams.
- Provides solid foundation for progressing cavity pump drive.
- Shorter overall height than separate components.
- 2000 PSI working pressure.
- NACE available.
- Low temperature carbon steel.

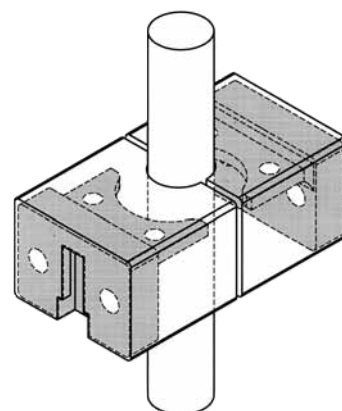


Illustration of Metal Reinforcement Inside 150H & 200P BOP Rams

SPECIFICATIONS ITBOP™

Sizes:	
Top Flange	3-1/8" 3000 PSI API
Bottom Flange	3-1/8" 2000 & 3000 or 7-1/16" 2000 & 3000
Side Outlets	2" LP x 2" LP or 2" LP x 3" LP
Vertical Bore	2.990"
Body Material	Steel
Cap Material	Ductile Iron, Carbon Steel
Ram Material	See Chart Below
Ram Screw	Alloy Steel
Packing Gland	Carbon Steel
Ram Sizes	Blind, 5/8"-1", 1-1/8", 1-1/4", 1-1/2", 1-3/4"
NOTE: 150H & 200P RAMS ARE NOT INTERCHANGEABLE	
Packing Material	NBR, HSN, FKM
Height	13-3/4"
Weight	183 lbs.
Width (Rams Open)	26"
Handles	Optional

Note: Other sizes and options available, Contact Customer Service.
NACE stainless steel optional.

Contact Customer Service for availability of 3000 PSI workover BOP with 4-1/16" vertical bore.

150H & 200P Ram Materials				
	NBR	Compound C™	HSN	FKM
Max. Temperature	250° F (121° C)	300° F (149° C)	325° F (163° C)	400° F (204° C)
Max. H₂S	2%	2%	10%	20%
Max. CO₂	NR	10%	20%	5%